



Litchfield Garden Club  
presents

*A Tapestry of Nature*

A Garden Club of America  
Flower Show  
June 16-17, 2023

# *A Tapestry of Nature*

A GARDEN CLUB OF AMERICA FLOWER SHOW

PRESENTED BY

LITCHFIELD GARDEN CLUB

June 16-17, 2023

LITCHFIELD COMMUNITY CENTER  
421 BANTAM ROAD  
LITCHFIELD, CONNECTICUT 06759

Gala Party Friday, June 16  
6:00 PM – 9:00 PM

Open to the Public Saturday, June 17  
10:00 AM – 4:00 PM  
ADMISSION FREE OF CHARGE

MEMBER OF  
THE GARDEN CLUB of AMERICA  
NATIONAL GARDEN CLUBS, INC.  
THE FEDERATED GARDEN CLUBS OF CONNECTICUT, INC.

*Celebrating 110 Years of Growing Together 1913-2023*

The purpose of the Litchfield Garden Club is to educate members and the public in the scientific and artistic methods of gardening, stimulate interest in horticulture, encourage and assist in civic beautification, raise environmental awareness, and protect and conserve our natural and historic heritage.

The purpose of The Garden Club of America is to stimulate the knowledge and love of gardening; to share the advantage of association by means of educational meetings, conferences, correspondence, and publications; and to restore, improve and protect the quality of the environment through educational programs and action in the fields of conservation and civic improvement.

The purpose of a flower show is threefold: to set standards of artistic and horticultural excellence; to broaden knowledge of horticulture, floral design, conservation, photography, and other related areas; and to share the beauty of a show with fellow club members and with the public.

# TABLE of CONTENTS

<b>TIMETABLE FOR EXHIBITORS</b>	<b>4</b>
<b>FLOWER SHOW COMMITTEE</b>	<b>5</b>
<b>EDUCATIONAL COMPONENT</b>	<b>7</b>
<b>GCA RULES</b>	<b>6</b>
<b>GENERAL INFORMATION</b>	<b>7</b>
<b>DIVISION I</b>	<b>9</b>
FLORAL DESIGN GUIDELINES	9
FLORAL DESIGN CLASSES	11
<b>DIVISION II</b>	<b>15</b>
HORTICULTURE GUIDELINES	15
HORTICULTURE CLASSES	17
<b>DIVISION III</b>	<b>21</b>
PHOTOGRAPHY GUIDELINES	21
PHOTOGRAPHY CLASSES	23
<b>DIVISION V</b>	<b>25</b>
EDUCATION EXHIBIT	25
CONSERVATION	25
GARDEN HISTORY & DESIGN	25
<b>GCA FLOWER SHOW AWARDS</b>	<b>26</b>
<b>SPONSORING CLUB AWARDS</b>	<b>29</b>
<b>GLOSSARY OF TERMS</b>	<b>29</b>
<b>REGISTRATION FORMS</b>	<b>30</b>
FLORAL DESIGN REGISTRATION FORM	31
HORTICULTURE REGISTRATION FORM	32
PHOTOGRAPHY REGISTRATION FORM	33
<b>AREA MAP OF THE LITCHFIELD COMMUNITY CENTER</b>	<b>35</b>

# TIMETABLE FOR EXHIBITORS

## PRE-SHOW

### Floral Design:

September 15, 2022	Registration opens for LGC members
October 15, 2022	Registration opens for all GCA club members
May 1, 2023	Registration deadline for all entrants

### Horticulture:

June 15, 2022	One-year ownership deadline
September 15, 2022	Registration opens for LGC members
October 15, 2022	Registration opens for all GCA club members
March 15, 2023	Three-month ownership deadline
May 1, 2023	Registration deadline for Classes 40-43 and 45.

### Photography:

September 15, 2022	Registration opens for LGC members
November 15, 2022	Registration opens for Zone II club members
January 15, 2023	Registration opens for all GCA club members
April 15, 2023	Registration and digital submission deadline
May 15, 2023	Photography entries passed

## SHOW WEEK JUNE 15-17, 2023

Thursday, June 15, 2023

3:00 - 5:00 PM	Horticulture entries passed and accepted All container plants from LGC should be entered at this time
----------------	--

Friday, June 16, 2023

8:00 - 10:30 AM	Floral Design and Horticulture entries accepted and passed
11:00 AM	All entries close
11:30 AM	Judges' briefing and lunch
12:30 PM	Judging begins
3:30 PM	Flower Show evaluation at Community Center
6:00 - 9:00 PM	Gala cocktail party at Community Center

Saturday, June 17, 2023

9:00 - 10:00 AM	Refreshing and maintenance of exhibits
10:00 AM - 4:00 PM	Show open to the public
4:15 - 5:00 PM	Removal of all entries

# FLOWER SHOW COMMITTEE

## Co-Chairmen

Sylvia Abbott - jlaska130@optimum.net

Kate Jamison - krjamison9@gmail.com

## Club President

Susan Magary - susanm@c4.net

## Division Chairmen

Division I Floral Design

Seton O'Reilly - setonoreilly@gmail.com

Division II Horticulture

Bronwyn Schoelzel - spotstango@gmail.com

Division III Photography

Catherine Oneglia - coneglia@gmail.com

Division V Education Exhibits

Grace Yagtug - gyagtug@gmail.com

Kate Fahey - cdoyleco@yahoo.com

Frank Fontana - beaver.house@yahoo.com

## Awards

Jane Hinkel - pjthink@hotmail.com

## Judges and Clerks

Nancy Post - npost1126@gmail.com

Lynne Sherman - lynne.sherman@yahoo.com

## Hospitality

Judges Luncheon

Susan Magary - susanm@c4.net

Gala Party, Silent Auction

Emily Dalton - emilydalton959@gmail.com

Crystal Carminati - crystal.carminati@gmail.com

Kristen Mahan-Kraut - kecnutmeg@gmail.com

Reception

Drew Harlow - dmharlow@gmail.com

Meredith Penfield - mrdthp@sbcglobal.net

Hospitality

Jackie Miller - pjaa@optonline.net

Susan Rea - smr1350@gmail.com

## Program

Joan Burgess - joangyorburgess@gmail.com

## Publicity

Doreen Tango Hampton - tangohampton@gmail.com

## Properties

Donielle Hawley - DonielleHawley@gmail.com

Jessica Travelstead - jessicatravelstead@hotmail.com

## Registration

Floral Design

Sara Gault - sjkgault103@gmail.com

Horticulture

Bronwyn Schoelzel - spotstango@gmail.com

Photography

Martha Phillips - mhphillips06759@gmail.com

## Schedule

Diane Stoner - stonerdiane627@gmail.com

## Signage

Sue Kennedy - drsok2@gmail.com

## Staging

Julia Metcalf - jmetcalf23@mac.com

## Treasurer

Rosamond Quay - rquay@me.com

## EDUCATIONAL COMPONENT

*The specific educational components of A Tapestry of Nature are Division II Section C Rooted in Nature and Division V, a combined presentation of the Conservation and Garden History & Design Committees. The statement of intent for the educational components is as follows:*

*“Gardens provide beauty, as well as creating habitats for birds, worms, and insects. A well-designed and managed garden both encourages soil health and pollinators. Our horticulture class 'Rooted in Nature' and exhibit 'Conservation Practices in Garden History and Design' illustrate the importance of native plants when creating gardens to support a mutual conservation fabric.”*

## GCA RULES

1. Please carefully read and follow GCA Flower Show Rules, General Information, and Division Guidelines. All rules as stated in *The Garden Club of America Flower Show and Judging Guide (FS & JG)*, October 2021 edition, shall apply.
2. All plant material must be correctly identified with the botanical and common names, if possible. Accepted references for nomenclature are:
  - a. Missouri Botanical Garden Plant Finder at <https://www.missouribotanicalgarden.org/plantfinder/plantfindersearch.aspx>
  - b. Royal Horticultural Society - Find a Plant at <https://www.rhs.org.uk/plants/search-Form>
3. The Garden Club of America expects all exhibitors to be aware of the need to promote conservation of endangered and threatened plants. Plants collected in the wild and listed by Connecticut Natural Heritage Program may not be exhibited in any flower show sponsored by a GCA club. Cultivated plant material listed by Connecticut Natural Heritage Program may be exhibited if accompanied by a typed card stating that it has not been collected from the wild or that it was collected out-of-state and giving information concerning its cultural requirements and methods of propagation. Natural Heritage Program lists of endangered plant material will be available before and during the show from the division chairmen and are available online at <https://plants.usda.gov/home/raritySearch>
4. Plant material showing evidence of insects or disease must be removed immediately from the exhibition area. This rule will be enforced at any time during the show, whenever the problem is identified.
5. All entries in the Floral Design and Horticulture Divisions must include fresh and/or dried plant material. Fresh plant material must be in water or conditioned in such a way as to remain in pristine form while on exhibition. An entry not maintained in show condition may have its award removed.
6. Locally invasive plants, diseased plant material, artificial plant material, live animals (including fish), taxidermy, natural birds' nests, feathers of any kind, and protected sea life, including coral, are not permitted. <https://plants.usda.gov/home/noxiousInvasiveSearch>

# GENERAL INFORMATION

Entries are open to all GCA and Federated Garden Club of Connecticut club members, including provisionals, and professionals in their disciplines except as noted in the schedule.

**It is extremely important that all designs are the original work of the designer(s). While the use of various techniques and components in the design may be inspired by other designs, the application of the techniques and components and the artistic concept to the design must be original. Artistic integrity is of utmost importance.**

1. Pre-registration is required for all floral design classes (Division I), Horticulture (Division II) classes 45-48, and 50, and Photography (Division III) classes. Pre-registration forms are provided at the back of the schedule. Entries in the Photography Division III are staggered according to LGC, Zone II or GCA members. See Division III Rules. Classes will be filled in the order registration forms are received according to the postmark/email date and time.
2. Only one entry per exhibitor is encouraged in floral design and photography classes except where noted in the schedule.
3. Entering a show constitutes permission to use images of the submitted content in all GCA channels of communication.
4. While The Garden Club of America, the Litchfield Garden and the Litchfield Community Center will exercise due caution in safeguarding exhibits, responsibility for damage, loss, or personal injury cannot be assumed.
5. Any clarification or change in the rules, as originally stated in the schedule, shall be communicated promptly in writing by the division chairman to all exhibitors in the class and, at the show, to the judges, and to the passing committee.
6. An entry card must accompany each entry. Entry cards will be available at the show and upon request from the registration or division chairmen in advance of the show. Information required on the entry card must be completed in black waterproof medium.
7. **The passing committee must pass each entry before an exhibitor may leave the show area.** The passing committee reserves the right to refuse any entry that does not conform to the rules of the schedule. The exhibitor has the option of correcting the entry if time permits. If not corrected, the entry cannot be judged, but may remain in place, marked "For Exhibit Only" with a brief, constructively worded statement explaining why it was not judged. The judges may not disqualify any entry passed by the passing committee unless evidence of insect infestation or disease is identified.



8. Once an entry is passed, the exhibitor(s) must immediately leave the show floor. The only exception will be flower show committee members who have entered and been passed according to the timetable. A passed entry may not be touched again by the exhibitor until after judging and then only to carry out necessary maintenance.
9. Only participating judges and clerks will be allowed on the show floor during judging. Flower show chairmen and division chairmen should remain nearby but off the show floor until needed.
10. All containers and accessories must be inconspicuously labeled with the exhibitor's name.
11. A novice is an individual exhibitor who has not won a first-place ribbon or a GCA Special Award in the division entered at a GCA Flower Show, GCA Major Flower Show, or Sanctioned Non-GCA Major Flower Show. An exhibitor winning a first-place ribbon in a GCA Flower Show is still considered a novice in a GCA Major Flower Show, or in a Sanctioned Non-GCA Major Flower Show, or in another division of any flower show. In addition, an exhibitor who has won a first-place ribbon or Special Award in a GCA Major Flower Show or Sanctioned Non-GCA Major Flower Show is no longer a novice in any level of GCA Flower Shows in the division won. Only individual novice exhibitors are eligible to receive the GCA Novice Awards or the Sandra Baylor Novice Floral Design Award. A novice exhibitor will be identified on the entry card, following the initial judging.
12. Statements of Intent are not permitted.
13. All exhibits must remain in place and in show condition until fifteen minutes following the closing time of the show.
14. The Litchfield Garden Club strongly encourages all participants to use biodegradable and eco-friendly materials in displays and class entries where possible.

# DIVISION I

## Floral Design Guidelines

1. Please carefully read and follow the GCA Rules, General Information, and Timetable for Exhibitors.
2. Registration is required by May 1, 2023.
3. An exhibitor may submit only one entry per class but may enter more than one class. The exhibitor(s) under whose name(s) the entry has been registered must create and complete the design. All participants must be listed on the entry card. Only listed exhibitors and show personnel may be on the show floor at the time of entry.
4. No more than two exhibitors may execute a design unless otherwise stated in the schedule.
5. If forced to withdraw, an exhibitor must notify the registration chairman and find a substitute unless there is a waiting list for the class.
6. **It is extremely important that all designs are the original work of the designer(s). While the use of various techniques and components in the design may be inspired by other designs, the application of the techniques and components and the artistic concept of the design must be original. Artistic integrity is of utmost importance.**
7. Designs may be executed off-site and brought to the show completed.
8. All entries must include fresh and/or dried plant material. Fresh plant material must be in water or conditioned in such a way as to remain in pristine form while on exhibition. Rooted plant material is allowed provided no soil is attached. An entry not maintained in show condition may have its award removed.
9. Mechanics should not be visible unless they are an integral part of the design.
10. Anything not prohibited in the GCA Rules, Floral Design Division Guidelines, or individual class descriptions is permitted.
11. The use of **cut** fruits and vegetables is not permitted.
12. Judging will be based on the principles of design: balance, contrast, dominance, proportion, rhythm, and scale, and the elements of design: light, space, line, form, color, texture, pattern, and size. Creativity is important, as are distinction, conformance to and interpretation of the class, and schedule.
13. See Glossary of Terms from GCA FS&JG Book 5 on page 29 for definition of floral design types listed in the Floral Design Division Classes.

14. Accessories are permitted unless otherwise stated in the class description.
15. Staging may not be moved. Pedestal tops may be enlarged to 16". All properties will be painted with Benjamin Moore 'Pilgrim Haze' gray # 2131-50. Questions regarding class requirements should be directed to the division chairman.
16. Prior to the show, arrangements may be made with the division chairman for out-of-town exhibitors who are unable to pick up their entries by Saturday June 17 at 4:15 PM. Any exhibitors unable to pick up an entry by the designated closing time must contact the division chairman regarding removal of the entry.
17. See *FS & JG Book 4: Pocket Guide @ the Show, October 2021 edition* for Scales of Points by which classes will be judged.

# Division I

## Floral Design Classes

*"Nature is painting for us, day after day, pictures of infinite beauty." John Ruskin*

### Class 1      *Nature Inspires the Artist*      4 Entries

*Artists have been inspired to portray nature in all its colorful forms on canvas. Floral designers enjoy the art of flower arrangement using plant material as their medium.*

A design inspired by a painting selected by the exhibitor from those offered in the schedule staged on a gray pedestal 40" high x 14" square against a beige curtain. The painting will be displayed on an easel to the left of the design. Selection of the painting will be in the order of registration. Paintings illustrated on pages 13 and 14. Viewed from the front.

### Class 2      *The Desert and the Tropics*      4 Entries

*Sun, rain, and atmosphere create contrasting climate zones on our planet. Each area has its own environment allowing plant and animal life to develop and thrive.*

A two-sided design staged in an open space on a gray pedestal 38" high x 14" square. Viewed on all sides and judged as one unit from the front and the back.

### Class 3      *Forest Bathing*      4 Entries

*This expression is translated from the Japanese term, Shinrin-yoku, which is the practice of leisurely walking in the forest and immersing oneself in its sights, sounds, smells and quietude, benefiting mental and physical well-being.*

A traditional mass or line-mass design emphasizing the beauty and simplicity of all green plant material, staged on a round pedestal 38" high x 15" diameter against a gray backdrop 82" high x 36" wide. All plant material must have been grown and arranged by one exhibitor whose name appears on the entry card. Foliage that is variegated or other than green is permitted. Viewed from the front.

**Eligible for the Elizabeth Miller Keith Award** – see page 29 of the Schedule for details.

### Class 4      *Migrations*      4 Entries

*Undulating flight patterns fill the air and earthly pathways evolve as the seasons change and spring and autumn journeys occur.*

A design inspired by seasonal flights and migrations staged on a gray pedestal 28" high x 16" square against a gray backdrop 82" high x 36" wide. Viewed from the front.

**Class 5      *Picnicking with the Pollinators*      4 Entries**

*Pollinators fertilize the blossoms that produce the fruits and vegetables necessary for a healthy diet.*

A functional table for two, including a decorative unit staged on a round table 29" high by 36" in diameter covered in a floor length dark green cloth provided by the committee. Exhibitor may add an overlay. The decorative unit must include some whole fruits and/or vegetables. Viewed from the front.

**Class 6      *Nature's Tiny Gems*      4 Entries**

*Nature's creations come in diverse sizes, but the small ones are often overlooked.*

A design inspired by the colors of one of nature's smaller creatures, staged in an area 12" high x 10" wide x 10" deep placed on a shelf 48" high from the floor. The exhibitor must designate the creature at the time of registration, e.g. ladybug, grasshopper, monarch butterfly. Duplicate creatures are not permitted. Exhibitor must provide an image of their selection on a 3" x 5" card. Viewed from the front.

**Class 7      *Textures in Nature*      4 Entries**

*Shiny, dull, fuzzy, smooth, spiny, rough are only a few of the diverse surface qualities found in nature.*

A design incorporating the pavé technique staged on a gray pedestal 24" high x 16" square staged against a yellow wall. Viewed from front.

<b>Scale of Points</b>					
<b>Traditional Floral Style</b>		<b>Table Class</b>		<b>Contemporary Floral Design</b>	
<b>Class 3</b>		<b>Class 5</b>		<b>Classes 1, 2, 4, 6, 7</b>	
Design	35	Floral Design	25	Design	35
Distinction	20	Overall Design	20	Creativity	20
Interpretation	20	Color/ textural harmony	15	Interpretation	20
Color Harmony	15	Interpretation	15	Distinction	15
Conformance	<u>10</u>	Conformance	15	Conformance	<u>10</u>
Total	100	Distinction	<u>10</u>	Total	100
		Total	100		

*Artists have been inspired to portray nature in all its colorful forms on canvas.  
Floral designers enjoy the art of flower arrangement using plant material as their medium.*

A design inspired by a painting selected by the exhibitor from those offered in the schedule, staged on a gray pedestal 40" high x 14" square against a beige curtain. The painting will be displayed on an easel to the left of the design. Viewed from the front.

---



*Garrowby Hill*, David Hockney, 1998



*Autumn in the Mountains*, Adrian Stokes, 1903



*Garden at Sainte-Adresse*, Claude Monet, 1867



*Tropical Forest with Monkeys*, Henri Rousseau, 1910

Class 1 *Nature Inspires the Artist*



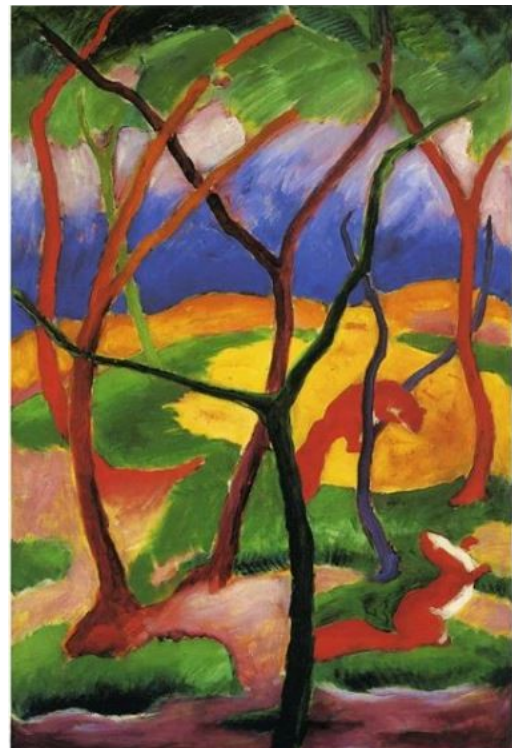
*Stump in Red Hills*, Georgia O'Keefe, 1940



*Carnation, Lily, Lily, Rose*, John Singer Sargent, 1885-86



*Bird With Long Tail Feathers*, Kano Yosetsu, c.1573



*Weasels at Play*, Franz Marc, 1911

## DIVISION II

### Horticulture Guidelines

1. Please carefully read and follow the GCA Rules, General Information, and Timetable for Exhibitors.
2. Advance registration for classes 45-48 and 50 is required by May 1, 2023.
3. An exhibitor may submit two entries per class except where noted, provided each is a different species or cultivar.
4. Entries must have been owned and grown by the exhibitor for a minimum of three months, unless otherwise stated in the schedule.
5. Entries eligible for the **Catherine Beattie Medal** and/or the **Clarissa Willemsen Horticulture Propagation Award** must have been in the possession of the exhibitor for at least six months and will be identified on the entry card.
6. All rooted entries propagated by the exhibitor must be identified with details of the method and relevant date(s) accompanied by a 4" x 6" Propagation Card in waterproof ink. These entries will be eligible for the **Clarissa Willemsen Horticulture Propagation Award**.
7. Stands, saucers, stakes, ties, etc., are allowed.
8. **Subdivision is preferable in the schedule rather than on the floor.** Classes may be subdivided, and entries moved and/or reclassified at the discretion of the show committee and/or the judges.
9. Containers are measured at the diameter or the diagonal of the widest point on the inside of the rim at the soil line.
10. One key card (diagram or plant list) is required when multiple species or cultivars are exhibited in the same container and/or propagation information is applicable. Key card must be a 4" x 6" white unlined card completed in black waterproof medium. A 4" x 6" card with photograph or diagram drawing with identifying numbers may be used.
11. Container-grown plants must be exhibited in containers that are clean, unobtrusive, and compatible with the exhibit. Terracotta clay or terracotta-colored pots are preferred. Other options are permitted. Double potting is not permitted. Top dressing is permitted but must not float when watered.
12. The committee will provide containers and wedging materials for all cut specimens except Classes 9 and 16.



13. A dot with the entry number on it should be affixed to the container to ensure an entry card separated from the exhibit container during staging, can be returned to the proper entry before judging.
14. The committee will water the exhibits if instructed to do so in writing. Notify the division chairman at time of entry with written instructions for watering.
15. Please refer to the *FS & JG Book 4: Pocket Guide @ the Show, October 2021 edition* for the Scales of Points.

## DIVISION II

### Horticulture Classes

"One touch of nature makes the whole world kin." John Muir

*Genus and species names should be italicized or underlined and cultivar names in single quotes and not italicized.*

#### Section A. CUT SPECIMENS

Classes 1 - 41

One stem not to exceed 30" in length from the lip of the container to the tip of the stem (*lip to tip rule*) with exception of Class 2 *Delphinium*, where there is no length limit.

##### Perennials and Biennials

Classes 1-9

##### **Blooming:**

One blooming stem - Any foliage must be attached to the stem

1. *Aquilegia*
2. *Delphinium*
3. *Digitalis*
- Paeonia lactiflora*, disbudded
4. *Paeonia* - single
5. *Paeonia* - semi-double
6. *Paeonia* - double
7. *Paeonia* - Itoh intersectional
8. Other blooming perennial or biennial
9. Display of 3-5 different genera and/or varieties displayed for cultural perfection that is artfully arranged in a clear glass container provided by the exhibitor. Must be accompanied by a 4" x 6" key card.

Classes 10-16

##### **Foliage:**

One stem. Exhibitors limited to one entry per class. Entry must be named variety. Leaves are measured length x width in inches. Non-green includes blue and yellow varieties.

10. *Hosta* - Giant: 144 square inches
  - a. Green leaves
  - b. Non-green and variegated
11. *Hosta* - Large: 81-144 square inches
  - a. Green leaves
  - b. Non-green and variegated
12. *Hosta* - Medium: 25-81 square inches
  - a. Green leaves
  - b. Non-green and variegated

13. *Hosta* - Small: 6-25 square inches
  - a. Green leaves
  - b. Non-green and variegated
14. *Hosta* - Miniature: 2-6 square inches
  - a. Green leaves
  - b. Non-green and variegated
15. Other perennial foliage
16. Collection of 3-5 different genera and/or varieties displayed in a single clear glass container provided by the exhibitor. Will be judged on Cultural Perfection 40%, Distinction 25%, Variety 15%, Artistic Effect 10% and Key Card 10%. Must be accompanied by a 4" x 6" key card.

### **Bulbs & Corms, Rhizomes and Tubers**

Classes 17 - 22

17. *Allium*
18. *Iris germanica*
19. *Iris sibirica*
20. *Iris* other
21. *Lilium*
22. Other

### ***Rosa***

Classes 23-31

One blooming stem, except where noted - must be exhibited with at least one attached leaf.

23. Species roses
24. Old Garden roses (prior to 1867)

Modern roses:

25. Floribunda and climbing floribunda
26. Grandiflora and climbing grandiflora
27. Hybrid tea and climbing hybrid tea
28. Miniature
29. Polyantha
30. Shrub (e.g., David Austin®/Knock Out® etc.)
31. Other

### **Woody Plants in Bloom**

Classes 32– 41

One stem - Any foliage must be attached to the stem

32. *Cornus*
33. *Magnolia*
34. *Malus*
35. *Rhododendron*

- 36. *Spirea*
- 37. *Syringa*
- 38. *Viburnum*
- 39. *Weigela*
- 40. Vines
- 41. Other

## **Section B. INDOOR CONTAINER GARDENING**

### **Trained Plants**

One entry per exhibitor per class.

Classes 42 - 44

- 42. Standard
- 43. Trained on a frame
- 44. Espalier

### **Heritage Plants**

Plants of great age, owned and grown by exhibitor for a majority of the lifetime of the plant. Limited to one entry per exhibitor per class.

Pre-registration by May 1, 2023 required.

Classes 45-47

- 45. 5 – 10 years
- 46. 11- 20 years
- 47. Over 20 years

### **Generations**

One entry per exhibitor (the exhibit of two plants is considered one entry).

A mother plant displayed with a propagated fledgling in separate, appropriate-sized containers.

Must be accompanied by a 4" x 6" [GCA Propagation Card](#).

Pre-registration by May 1, 2023 required.

- 48. Mother and fledgling

### **Par Class**

An exhibit of exceptional horticultural merit, which does not qualify for entry elsewhere in the Horticulture Division. Entries in the Par class must have been owned and grown by the exhibitor for a minimum of **one year**. Cut specimens, bonsai and hanging baskets are not permitted.

- 49. Container-grown Par plant. Container may not exceed 12" in diameter.

## **Section C. OUTDOOR CONTAINER GARDENING**

This class is an educational component, which is eligible for the Education Award.

STATEMENT OF INTENT: "This class is an educational component eligible for the Education Award. This class is presented to educate the public on appropriate native plants for use in residential as well as public landscapes."

## ROOTED IN NATURE

### Collection of Rooted Plants Native to Northeast United States

Limited to 8 entries. Pre-registration by May 1, 2023 required.

An exhibit containing 3-5 specimens of container-grown plants, judged primarily for cultural perfection and variety. Selected plants must be native to Northeast United States. Cultivars of native plants are permitted. The reference on native plants is [Audubon.org/nativeplants](http://Audubon.org/nativeplants).

Container (18") distributed by the Horticulture Committee. Must be accompanied by 4" x 6" key card or photo.

#### 50. Collection of Rooted Native Plants

#### Scale of Points

Cultural perfection	50
Variety	30
Staging and Arrangement	10
Key card	<u>10</u>
Total	100

### Section D. CHALLENGE CLASSES

Limited to LGC members. One entry per exhibitor per class except Classes 53 and 54 where 2 plants per exhibitor permitted.

Classes 51 - 54

Swamp milkweed *Asclepias incarnata* seeds distributed to LGC members in October 2022. Swamp milkweed is an important food source for local pollinators including the Monarch butterfly.

Displayed in appropriate-sized container with saucer.

51. Novice

52. Other

Container-grown succulents from November 4, 2021 workshop. Displayed in appropriate-sized container with saucer. Two entries per class.

53. Novice

54. Other

### Section E. COMMUNITY WORKSHOP PLANT EDUCATION CLASS

Class 55 *Pelargonium*

This class is open to all attendees at the plant workshop held at the Litchfield Community Center in March. The attendees are members of the greater Litchfield community, and the entries are FOR DISPLAY ONLY and not judged. *Pelargoniums* were distributed as small plants to attendees and planted into small "starter" pots. Exhibitors are encouraged but not required to display a key card with the entry describing how the plant was grown.

## DIVISION III

### Photography Guidelines

1. Please carefully read and follow the GCA Rules, General Information, and Timetable for Exhibitors.
2. Advance registration is required for all entrants. September 15, 2022 entries open for LCG members, November 15, 2022 entries open for Zone II club members and January 15, 2023 entries are open for all GCA club members.
3. An exhibitor may submit only one entry per class but may enter 2 classes.
4. If forced to withdraw, an exhibitor must notify the division chairman and find a substitute unless there is a waiting list for the class.
5. A photograph previously entered in any GCA, GCA Major, Sanctioned Non-GCA Major Flower Show, or a GCA *Focus* online contest may not be entered again even with slight alterations and/or reprinting. The same photograph may only be entered in one show at a time.
6. Each photograph must be the work of the exhibitor, under whose name it is registered. In manipulated photographs, any added imagery must be the work of the exhibitor. Non-representational commercial overlays and textures are allowed. Matting, mounting, and printing may be done professionally. All photographs must be 2-dimensional and printed on paper unless otherwise specified. All post-production must be done before the photograph is printed.
7. Any editing at any stage must be the work of the exhibitor. This includes enhancement for color or clarity, removal of a part of the image, combining images, or distorting the original subject.
8. Photography entries are limited to subjects consistent with The Garden Club of America interests such as horticulture, floral design, gardens/landscapes, conservation, and the environment, historic preservation, civic improvement and the natural world. Plant material is required in all photographs.
9. Photographs must be flush mounted on black mat board and may not be over-matted. Overall dimension of entry must be a minimum of 36" and not exceed 50" in total perimeter measurement. The surface finish is the choice of the exhibitor. Glass and framing are not permitted. The Litchfield Garden Club strongly encourages all participants to use biodegradable and eco-friendly materials in displays and class entries where possible.
10. Each entry must have the entry form affixed to the back of the photograph mounting with the exhibitor's name, garden club, zone, email, address, phone number and class entered. The top of the photograph must be indicated.

11. The division chairman will provide an entry card to be staged with each photograph. Identification of plant material on the entry card is not required but encouraged whenever possible.
12. A title or statement of intent is not permitted.
13. Photographs will be hung against a matte black background.
14. Photographs must be received no later than April 15, 2023. Send photographs to: Cathy Oneglia, 24 East Chestnut Hill Road, Litchfield, CT 06759. In addition, email a 1-5 MB JPEG image to [coneglia@gmail.com](mailto:coneglia@gmail.com). Registration will be confirmed, and receipt of the photograph will be acknowledged.
15. Photographs will be passed by the photography committee to verify that class specifications have been met. If a photograph is not passed, the exhibitor will be notified and allowed, if time permits, to send a replacement photograph.
16. Only the photography committee may reclassify an entry, but only with the permission of the exhibitor. The photography committee and/or the judges may subdivide a class.
17. Only appropriate images of a child or children should be submitted to, passed, and exhibited in the Photography Division and published in *Focus*.
18. If a photograph is to be returned, the exhibitor must provide a self-addressed return label, envelope or mailing box, and postage and packing material. Any award received will be noted on the back of the mount before it is returned. If a photograph is not to be returned, to receive the comment card and any award won, include a self-addressed and stamped envelope.
19. A follow-up letter or email will be sent to all photography exhibitors listing the results of the Photography Division.
20. See Glossary of Terms from the *GCA FS&JG Book 5* on page 29 for definition of photograph types listed in the Photography Division Classes.

#### Scale of Points

Creative Techniques Class 6		Classes 1-5	
Creativity	30	Creativity	25
Composition	20	Composition	25
Technical Skill	25	Technical Skill	20
Conformance/Interpretation	10	Conformance/Interpretation	20
Distinction	<u>15</u>	Distinction	<u>10</u>
Total	100	Total	100

## DIVISION III

### Photography Classes

*"I wish that all of nature's magnificence, the emotion of the land, the living energy of place could be photographed."* Annie Leibovitz, photographer

**Class 1**     *An Alfresco View*     **4 Entries**

*Water, the element essential to life, also brings diversity to the landscape.*

A color landscape image which incorporates a body of water, e.g., ocean, lake, river.

**Class 2**     *A Stroll Through the Natural World*     **4 Entries**

*Walking with nature, one can feel taller than the trees.*

An intimate color landscape image featuring a natural path or boardwalk in the woods or forest. (An intimate landscape excludes the horizon and is pared down to smaller scenes.)

**Class 3**     *Busy at Work in the Garden*     **4 Entries**

*Creatures at work in the garden add their own sights and sounds to the environment.*

A color close-up or macro image of a pollinator at work in a garden.

**Class 4**     *Reflecting on Change*     **4 Entries**

*The world is an endless prospect of magic and wonder.*

A color diptych composed of two 8" x 10" color images, side by side, of the same garden scene at two different times of day or in two types of weather.

**Class 5**     *A Study for Audubon*     **4 Entries**

*All the elements of nature are intertwined to form a harmonious unit.*

A color portrait of a bird in its natural habitat.



Class 6 *A Tapestry of Nature*

4 Entries

*The world weaves a tapestry that is shared by all.*

An abstract image, which focuses on form, color, pattern, and texture, showing essence rather than reality.

**DIVISION V**  
**EDUCATION EXHIBIT**  
**Conservation**  
**Garden History & Design**

This class is an educational component, which is eligible for the Education Award.

**CONSERVATION PRACTICES IN GARDEN HISTORY AND DESIGN**

STATEMENT OF INTENT: “This exhibit explores the relationships between conservation and gardens. Gardens provide beauty, as well as creating habitats for birds, worms, and insects. A well-designed and managed garden both encourages soil health and pollinators. This exhibit illustrates various ways to create gardens that support a mutual conservation fabric.”

**Scale of Points**

Educational Exhibits	
Educational Value	60
Staging	20
Creativity and distinction	<u>20</u>
Total	100

## GCA FLOWER SHOW AWARDS

GCA Flower Show Awards described below have been applied for and will be presented if merited.

### *Educational Component (Horticulture Division Class 50 and Division V)*

The **Education Award** may be presented to an entry, a class, a division or an entire show for an exhibit of exceptional merit, which educates the public in keeping with the purpose statement of the GCA. This award may be given to GCA clubs and GCA club members.

### *Division I* *Floral Design*

**Best in Show Floral Design** is selected from first place winners in the division.

The **Dorothy Vietor Munger Award** may be awarded to members of The Garden Club of America clubs in competitive Floral Design classes at a GCA Flower Show. It is offered in recognition of creative work of outstanding beauty using predominantly fresh plant material. The design must have placed first, second, or third. Challenge class entries are not eligible. The award is not a substitute for Best in Show and will be given at the discretion of the judges.

The **Harriet DeWaele Puckett Creativity Award** may be awarded to members of GCA clubs or non-members in recognition of a uniquely skillful and creative response to an imaginative schedule in Floral Design. It will be given for an innovative and interpretive entry, which, although it abides by the principles of good design, goes beyond traditional period arrangement to whatever art form the exhibitor(s) chooses. The design must have placed first, second, or third in the Floral Design Division of a GCA Flower Show. An entry in any challenge class is not eligible to receive this award. The award is not a substitute for Best in Show and will be given at the discretion of the judges.

The **Sandra Baylor Novice Floral Design Award** may be given at a GCA Flower Show to an exhibitor who is a member of a GCA club and who has never won first place, or a GCA Special Award in the Floral Design Division of a GCA Flower Show, GCA Major Flower Show or Sanctioned Non-GCA Major Flower Show. It shall be awarded to an individual novice exhibitor for a unique and skillful response to the schedule. Novice entries placing first, second, or third in any competitive class, including challenge classes, are eligible for this award.

## *Division II*

### *Horticulture*

**Best in Show Horticulture** is selected from first place winners in the division.

The **Catherine Beattie Medal** may be awarded for a horticulture entry distinguished by its vibrancy, prime condition, and perfection of grooming. The exhibitor must have owned and grown the exhibit for at least six months. The medal may be awarded for a single plant, collection of plants, container garden, or cut specimen, but only if there is an exhibit worthy of the honor. It may be awarded to members of GCA clubs only; individual, joint, and club entries are eligible. The award should not be considered as a substitute for Best in Show. The medal may not be awarded to the same exhibit more than once; however, offspring of a Beattie winner are eligible to receive the award.

The **GCA Novice Award in Horticulture** may be awarded for an outstanding exhibit to a member of a GCA club who has never won first place or a GCA Special Award in the horticulture division in a GCA Flower Show, GCA Major Flower Show or Sanctioned non-GCA Major Flower Show. Novice entries placing first, second, or third are eligible for this award.

The **Clarissa Willemsen Horticulture Propagation Award** may be awarded for a horticulture entry distinguished by its prime condition, flawless grooming and difficulty of propagation. The entry must have been propagated and grown by the exhibitor for at least six months. This award may be given for a single rooted plant or a collection of rooted plants. The dates and method of propagation must be recorded on an accompanying propagation card. The entry must have placed first, second, or third at a GCA Flower Show. The award may not be given to the same exhibit more than once.

The **Rosie Jones Horticulture Award** may be presented to a horticulture entry of exceptional visual appeal that reflects the spirit of growing with joy and enthusiasm and inspires others to propagate, grow, show and share horticulture. An exhibit that has been propagated by the exhibitor will be given special consideration but propagation is not a requirement. Perfection, while always desirable, is not a primary criterion. This award celebrates the ineffable joy inherent in the beauty and pursuit of horticulture.

## *Division III*

### *Photography*

**Best in Show Photography** is selected from first place winners in the division.

The **GCA Novice Award in Photography** may be awarded for an outstanding exhibit to a member of a GCA club who has never won first place or a GCA Special Award in the photography division in a GCA Flower Show, GCA Major Flower Show or Sanctioned non-GCA Major Flower Show. Novice entries placing first, second, or third are eligible for this award.

The **Photography Creativity Award** may be awarded at a GCA Flower Show to a member of a GCA club in recognition of creative and technical excellence in response to the theme of the schedule. The entry must have placed first, second, or third.

## *Division V*

### *Conservation and Garden History & Design Exhibit* *Education and Conservation Awards for Large Exhibits*

The **Ann Lyon Crammond Award** may be presented at a GCA Flower Show to an outstanding educational exhibit, which best educates the public about gardens. Any educational exhibit, which increases the appreciation of any aspect of plants, gardens, or landscape design, may be considered for this award. The award may be given to GCA club members, member clubs, non-members or other organizations.

The **Marion Thompson Fuller Brown Conservation Award** may be presented for an outstanding conservation exhibit at a GCA Flower Show. The award recognizes an exhibit of exceptional educational and visual merit, which increases knowledge and awareness of the environment. The exhibit should emphasize environmental concerns and may demonstrate conservation practices. Plant material may or may not be used and, when appropriate, must be clearly identified. Protected material may be included if such materials are identified as protected and not collected in the wild. The award may be given to The Garden Club of America clubs, club members, non-members or other organizations.

### **Overall (Divisions I - V)**

**Judges' Commendation(s)** may be given to an entry, class, section, special exhibit or other aspect of the show that is of exceptional merit.

**Award of Appreciation** may be given to thank an exhibitor or group for participation. The award may also be given to non-judged classes.

# SPONSORING CLUB AWARDS

The **Elizabeth Miller Keith Flower Arrangement Award** is a Zone II Award honoring Elizabeth Miller Keith, a longtime Washington Garden Club member for an outstanding flower arrangement of fresh and/or dried plant material in any style chosen by the individual club be it miniature, mass, freestyle, etc. with the requirement that the plant material must predominate. The plant material must have been *grown* and *arranged* by one exhibitor whose name appears on the entry card. A special class in the floral design division of the show must be included in the schedule limited to exhibits competing for this award. Plant material must be owned for a minimum of two months.

## GLOSSARY OF TERMS

### *Flower Show and Judging Guide- Book 5*

**Interpretive Design:** [FD] a design in which components are selected and organized to portray a theme, idea, occasion, mood, or atmosphere; not a design style.

**Two-Sided Design:** [FD] a design organized in one or more containers that are joined to appear as one. Opposing sides (back and front, never left and right) present a composition thematically linked. A concentration of components between the two contrasting design segments prevents one side from showing through to the other in their focal areas. The center may be composed of plant material, accessory, etc. of whatever will provide a visual concealment between the focal areas of the two designs, however, not a background panel. Both sides may share the dominant line and enclosed space. Staged to be viewed from all sides and judged as one unit from the front and the back.

**Traditional Mass Design:** [FD] [a profusion of flowers of various forms and sizes arranged in an oval, triangular, or fan-shaped design; a closed silhouette having more solids than voids. Plant material and other components usually radiating from a central point.

**Traditional Line-Mass Design:** [FD] blending mass and line designs with an open silhouette, voids equal to solids; usually asymmetrical with a rhythmic flow.

**Functional Table:** [FD] a table exhibit arranged for dining, including dishes, glassware, linens, and floral design(s) with or without other components.

**Pave Technique:** [FD] a technique in which plant material is placed closely together to form a pattern, often creating a cobblestone effect that may be flat or contoured. Derived from jewelers' term, "en pave setting."

\*\*\*\*\*

**Landscape:** [P] a view of the scenery of any kind from wilderness vistas to urban cityscapes, land, or sea. Primary subject is the scenery, and it must dominate although the image may contain secondary elements such as people, animals, or objects. City elements predominate in cityscapes; sea predominates in seascapes.

**Intimate Landscape:** [P] landscape that excludes the horizon and is pared down to a small scene.

**Close-up: [P]** a photo taken close to the subject or with a long focal-length lens to permit a close and detailed view of the object. The object fills most of the frame.

**Macro: [P]** a photo in which the size of the subject on the negative or image sensor is life-size or greater.

**Dptych or Two-panel: [P]** a picture that has two panels placed next to each other.

**Portrait: [P]** a formal photograph of a person or group of people [or creature(s)], or a plant or group of plants that captures the likeness in the fullest sense.

\*\*\*\*\*

## REGISTRATION FORMS BELOW

*A Tapestry of Nature*  
DIVISION I  
Floral Design Registration Form

Please complete one Registration Form per entry.  
Registration Deadline: May 1, 2023

Send to: Sara Gault  
[Sjkgault103@gmail.com](mailto:Sjkgault103@gmail.com)  
860-567-1641  
54 Baldwin Hill Road  
Litchfield, CT 06759

**Please print using block letters.** Date: \_\_\_\_\_

Name: \_\_\_\_\_

Garden Club and Zone: \_\_\_\_\_

Address: \_\_\_\_\_

Tel: \_\_\_\_\_ Email: \_\_\_\_\_

Co-Exhibitor(s): \_\_\_\_\_

Class Number

Class Title

1<sup>st</sup> Choice: \_\_\_\_\_

2<sup>nd</sup> Choice: \_\_\_\_\_

**Novice? Yes No**

A novice is an individual exhibitor who has not won a first-place ribbon or a GCA Special Award in Floral Design in a GCA Flower Show, GCA Major Flower Show, or Sanctioned Non-GCA Major Flower Show. If your novice status changes before the date of this show, please notify the division chairman or class consultant.



*A Tapestry of Nature*  
DIVISION II  
Horticulture Registration Form

Registration is **not** required for cut specimen classes 1-36.  
Pre-registration is required for Classes 40-43 and Class 45.  
Please complete one Registration Form per entry by May 1, 2023 the registration deadline:  
Send to: Bronwyn Schoelzel  
[spotstango@gmail.com](mailto:spotstango@gmail.com)  
860-567-8518  
194 Chestnut Hill Road  
Litchfield, CT 06759

**Please print using block letters.** Date: \_\_\_\_\_

Name: \_\_\_\_\_

Garden Club and Zone: \_\_\_\_\_

Address: \_\_\_\_\_

Tel: \_\_\_\_\_ Email: \_\_\_\_\_

Class Number

Class Title

1<sup>st</sup> Choice: \_\_\_\_\_

2<sup>nd</sup> Choice: \_\_\_\_\_

**Novice? Yes No**

A novice is an individual exhibitor who has not won a first-place ribbon or a GCA Special Award in Horticulture in a GCA Flower Show, GCA Major Flower Show, or Sanctioned Non GCA Major Flower Show. If your novice status changes before the date of this show, please notify the division chairman or class consultant.

*A Tapestry of Nature*  
DIVISION III  
Photography Registration Form

Please complete one Registration Form per entry.  
Registration Deadline for all entrants April 15, 2023.  
September 15, 2022, Entries registration opens for LGC members.  
November 15, 2022, Entries registration opens for Zone II club members.  
January 15, 2023, Entries registration opens for all GCA club members.  
Email registration to: Martha Phillips  
[Mhphillips06759@gmail.com](mailto:Mhphillips06759@gmail.com)

**Please include the following in the body of the email:**

Date: \_\_\_\_\_

Name: \_\_\_\_\_

Garden Club and Zone: \_\_\_\_\_

Address: \_\_\_\_\_

Tel: \_\_\_\_\_ Email: \_\_\_\_\_

Class Number: \_\_\_\_\_ Class Title: \_\_\_\_\_

Digital submissions must be submitted by April 15, 2023 and must be 1 MB - 5 MBs RGB color space, JPEG and file titled Class #, entrant's name.jpg (e.g., Class#10, Joan\_Smith.jpg)

**Novice? Yes No**

A novice is an individual exhibitor who has not won a first-place ribbon or a GCA Special Award in Photography in a GCA Flower Show, GCA Major Flower Show, or Sanctioned Non-GCA Major Flower Show. If your novice status changes before the date of this show, please notify the division chairman and the class consultant.

*A Tapestry of Nature*  
Photography Entry Form

The following must be copied and affixed to the back of the photograph mounting  
when entry is mailed or submitted.

Please indicate the Top of the Photograph on the back of the entry.

Photograph Entry Deadline: April 15, 2023

Please complete one Entry Form per photograph. Affix the form to the back of the mounting.

Send photograph to: Cathy Oneglia/24 East Chestnut Hill Road/Litchfield, CT 06759

Please accompany photograph with JPEG file between 1-5 MB.

Class Entered: \_\_\_\_\_

Name: \_\_\_\_\_

Garden Club and Zone: \_\_\_\_\_

Email: \_\_\_\_\_

Address: \_\_\_\_\_

Tel: \_\_\_\_\_

Return postage and packaging have been provided.

Identifiable Plant Material (if possible): \_\_\_\_\_

**Novice? Yes No**

A novice is an individual exhibitor who has not won a first-place ribbon or a GCA Special Award in Photography in a GCA Flower Show, GCA Major Flower Show, or Sanctioned Non-GCA Major Flower Show. If your novice status changes before the date of this show, please notify the division chairman or class consultant.

# AREA MAP OF THE LITCHFIELD COMMUNITY CENTER

